

# Bakery



**Cyrus O'Leary**  
Lemon Meringue Pies  
**\$10<sup>49</sup>** 46 oz.

**WoW**  
GF Chocolate Chip  
Cookies  
**\$6<sup>99</sup>** 8 oz.



**Dancing Deer**  
GF Chunk Brownies  
**\$5<sup>99</sup>** 7 oz.

## Featured Item

**Kellogg's**  
Special K Cereals  
**\$3<sup>49</sup>** 10-13oz.



# Dairy/ Frozen

**Clover Farms**  
Natural Whipped  
Topping  
7 oz.  
**\$4<sup>99</sup>**



**Clover Farms**  
Whipped  
Topping  
13oz.  
**\$3<sup>99</sup>**



**Clover Organic**  
Large Brown Eggs  
Dozen  
**\$5<sup>99</sup>**



**Jell-O**  
Pudding &  
Gels  
4 pack  
**\$1<sup>99</sup>**



**Oikos**  
Greek Yogurt  
5.3oz.  
**\$1<sup>99</sup>**



**Land o' Lakes**  
Buttery Spread  
15oz.  
**\$2<sup>19</sup>**



**Taste Nirvana**  
Coconut Water  
16oz.  
**\$2<sup>39</sup>**



**Hubert's**  
Lemonades  
16oz.  
**\$1<sup>99</sup>**



**Argo**  
Iced Teas  
13.5oz.  
**\$1<sup>99</sup>**



Don't forget to mention SPCA (Acct. 11) to  
your cashier to donate 5% of your total  
transaction to the Santa Cruz County  
SPCA.

# Grocery

**Fritos & Cheetos**  
Chips & Puffs  
7-9oz.  
**\$2<sup>99</sup>**



**Lay's**  
Kettle Chips  
8oz.  
**\$2<sup>89</sup>**



**Grain Berry**  
Cereals  
12oz.  
**2 for \$5**



**Silver Palate**  
Oatmeal  
14oz.  
**2 for \$5**



**Betty Crocker**  
Frosting &  
Cake Mix  
16oz.  
**\$1<sup>69</sup>**



**Golden Grain**  
Pasta  
32oz.  
**\$2<sup>69</sup>**



**Silver Palate**  
Pasta Sauce  
25oz.  
**\$3<sup>99</sup>**



**Kraft**  
Salad Dressing  
16oz.  
**\$2<sup>69</sup>**



**Amy's**  
Soups  
4.3oz.  
**\$2<sup>19</sup> - \$2<sup>79</sup>**



**Mott's**  
Applesauce  
6 Packs  
**\$2<sup>59</sup>**



February 27th—March 5th, 2019  
Ad valid

CURRENT RESIDENT OR

783-25 Rio Del Mar Blvd.  
Aptos, CA 95003  
831.688.7442  
www.deluxefoodsofapτος.com  
Store Hours:  
Monday-Saturday 8:00am-9:00pm  
Sunday 8:00am-7:00pm

PRSRRT STD  
US POSTAGE PAID  
APTOS, CA 95003  
PERMIT NO. 65

Like us on Facebook!  
[www.facebook.com/deluxefoodsofapτος](http://www.facebook.com/deluxefoodsofapτος)

# Produce



**Broccoli Crowns**  
USA  
**\$1<sup>49</sup>** LB.



**Romaine Hearts**  
USA  
**\$2<sup>99</sup>** EA.



**Green Beans**  
Mexico  
**\$1<sup>49</sup>** LB.



**Red Flame Grapes**  
Peru  
**\$2<sup>99</sup>** LB.



**Thompson Grapes**  
Peru  
**\$2<sup>99</sup>** LB.



**Grapefruit**  
USA  
**79¢** EA.



**Navel Oranges**  
USA  
**\$1<sup>19</sup>** LB.



**Yellow Onions**  
USA  
**49¢** LB.

# Meat / Seafood



**Harris Ranch**  
**Porterhouse Steaks**  
**\$13<sup>99</sup>** LB.



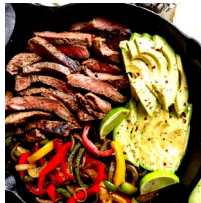
**Harris Ranch**  
**T-Bone Steaks**  
**\$12<sup>99</sup>** LB.



**Foster Farms**  
**Chicken Thighs**  
**\$1<sup>79</sup>** LB.



**All Natural**  
**Pork Steaks**  
**\$2<sup>99</sup>** LB.



**Pan-Ready**  
**Beef Fajitas**  
**\$7<sup>99</sup>** LB.



**Cooked**  
**Large Prawns**  
**\$13<sup>99</sup>** LB.

# Wine / Beer



**Sarah's Vineyard**  
2016 Santa Cruz Chardonnay  
750 ml **\$15<sup>99</sup>**



**Soquel Vineyards**  
2017 Trinity Rosso Red  
750 ml **\$10<sup>99</sup>**



**Kendall-Jackson**  
2016 Chardonnay  
750 ml **\$14<sup>99</sup>**



**Paloma Rose**  
Italian Spumante  
750 ml **\$9<sup>99</sup>**



**Divum**  
2016 Chardonnay  
750 ml **\$9<sup>99</sup>**



**North Coast**  
**Scrimshaw**  
**\$7<sup>99</sup>** +CRV



**Sudwerk**  
6 Packs  
**\$8<sup>39</sup>** +CRV



**Carlsberg**  
Green Label 6 Packs  
**\$8<sup>39</sup>** +CRV

# Cheese



**Fresh Asiago**  
A young cheese that melts in your mouth. Sweet and slightly sour taste.  
**\$11<sup>99</sup>** LB.



**Koko's Coconut Gouda**  
Fresh cow's milk with a healthy dash of coconut cream, for extra flavor and creaminess.  
**\$11<sup>99</sup>** LB.



**Laubscher White Cheddar**  
A hard cheese of English inspiration, with a relatively mild flavor.  
**\$7<sup>99</sup>** LB.

# Deli



**Boar's Head**  
Maple Ham  
**\$12<sup>49</sup>** LB.



**Boar's Head**  
Maple Turkey  
**\$11<sup>99</sup>** LB.



**Deluxe's**  
Smokey Cheddar & Bacon  
Potato Salad  
**\$8<sup>49</sup>** LB.